

Safetinx

ACCESS CONTROL BARRIERS

CONTRINEX





ACCESS CONTROL BARRIERS

MAIN FEATURES

- Beam gap: 300, 400 or 500 mm (3 to 6 beams)
- Operating range: 1 ... 15 m or 10 ... 50 m (can be configured)
- Protective height: 832 ... 1532 mm
- Category 4, PL e according to EN/ISO 13849-1 (former EN 954-1)
- Type 4 according to IEC 61496-1 and -2
- Certified TÜV and CE
- Impervious: degrees of protection **IP 65, IP 67 & IP 69K**
- 2-channel selection
- Optical synchronization
- Permanent autocontrol

TECHNICAL DATA

Dimensions	42 x 48 x Ht mm
Supply voltage range	24 VDC ± 15%
Current consumption sender	35 mA max. / 1.0 W max.
Current consumption receiver (excl. load)	75 mA max. / 2.2 W max.
Output current	0.2 A max. per output
Safety level (EN/ISO 13849-1)	Category 4, PL e
Safety type (IEC 61496-1 and -2)	Type 4
Protection class (IEC 61140)	III
Ambient temperature range	0 ... +50 °C (+32 ... +122 °F)
Storage temperature range	-25 ... +70 °C (-13 ... +158 °F)
Degree of protection (EN 60529)	IP 65 & IP 67 / IP 65, IP 67 & IP 69K (-69K)
Housing material	Aluminum
Material of optical parts	PMMA
Operating range	1 ... 15 m / 10 ... 50 m (can be configured)
Sender wavelength	IR 880 nm

HOUSING

Aluminum profile 42 x 48 mm with dual fixing groove. IP 69K models totally impervious.

CONFIGURATION OF OPERATING RANGE

Depending on wiring, the maximum operating range can be fixed to either 50m or 15m.

ELECTRONIC PROTECTION

Safetinex access control barriers are self-protected against overloads and short-circuits. They can also withstand short high-voltage overloads.

CONNECTION

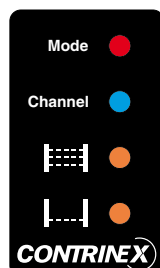
Safetinex access control barriers with M12 5-pole connector are standard. Versions with PUR cable, 2 m, 5 m or 10 m long, are available on request.

DOCUMENTATION

Detailed data sheets for these products can be found on the Contrinex website www.contrinex.com or ordered free of charge from our distributors.

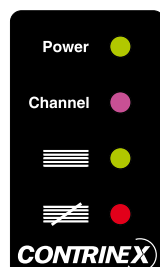
LEDS

LED indicators on YCA **sender** unit



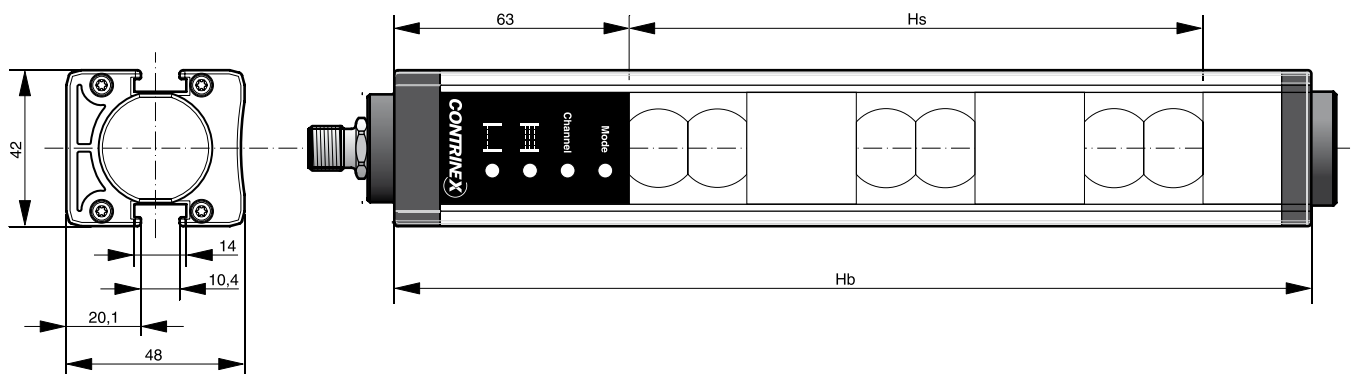
- | | | |
|-----------|---|--|
| Mode | : | off when max. operating range 15m
blue when max. operating range 50m
red or purple in case of wiring error |
| Channel | : | blue when channel 1 selected
purple when channel 2 selected |
| Alignment | : | steady orange when screen not fully aligned
flashing orange when first third of screen aligned
off when screen fully aligned |
| Alignment | : | steady orange when lowest beam not aligned
flashing orange when lowest beam aligned
off when screen fully aligned |

LED indicators on YCA **receiver** unit

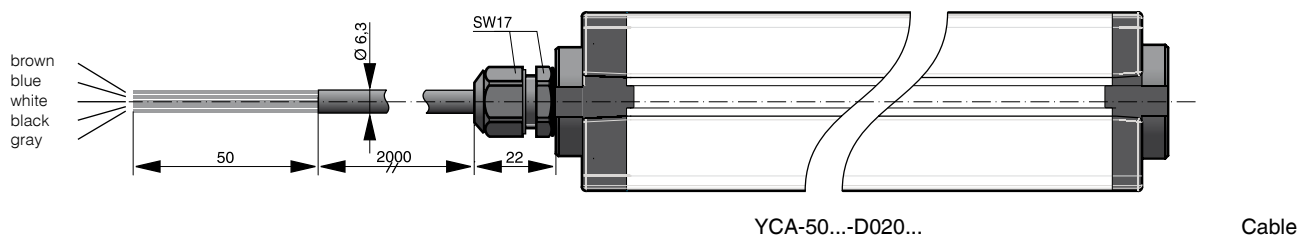
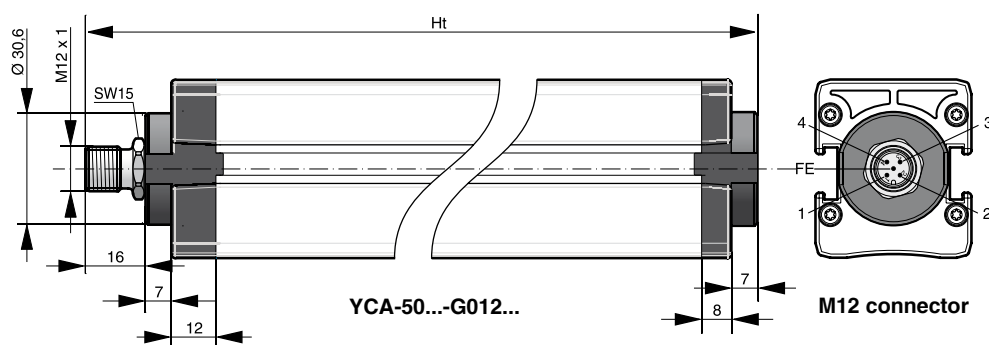


- | | | |
|---------|---|--|
| Power | : | green when power ON |
| Channel | : | blue when channel 1 selected
purple when channel 2 selected |
| Status | : | green when OSSD outputs ON |
| Status | : | red when OSSD outputs OFF |

DIMENSIONS



PIN ASSIGNMENT

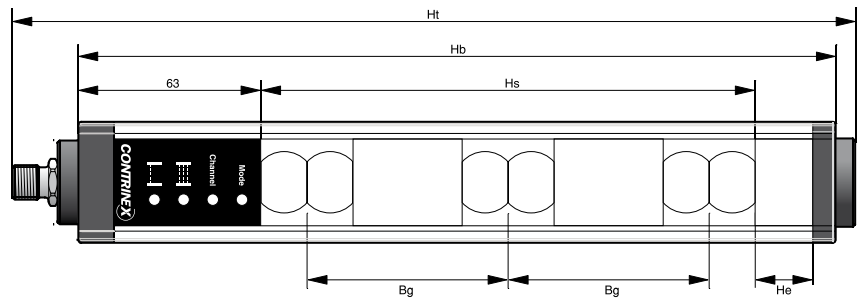


ASSIGNMENT	FUNCTION	PINS/WIRES ON SENDER		PINS/WIRES ON RECEIVER	
		M12 CONNECTOR	CABLE	M12 CONNECTOR	CABLE
Supply voltage	24 VDC for channel 1 / 0 V for channel 2	1	brown	1	brown
Supply voltage	0 V for channel 1 / 24 VDC for channel 2	3	blue	3	blue
Operating range selection	24 V: operating range 10 ... 50 m 0 V: operating range 1 ... 15 m	4	black	-	-
Operating range selection	0 V: operating range 10 ... 50 m 24 V: operating range 1 ... 15 m	2	white	-	-
Output	OSSD1	-	-	2	white
Output	OSSD2	-	-	4	black
Functional earth	Shield	FE	gray	FE	gray

www.contrinex.com



**ACCESS CONTROL
BARRIERS
AVAILABLE MODELS**



TYPE-SPECIFIC DATA

Number of beams	4	5	6
Beam gap (Bg) [mm]	300	300	300
Total height (Ht) [mm] *	1154	1412	1670
Housing height (Hb) [mm]	1124	1382	1640
Protective height (Hs) [mm]	932	1232	1532
Height extension (He) [mm]	121	79	37
Current consumption [mA]	110	110	110
Response time [ms]	5.0	5.9	6.7

PART REFERENCE (BOLD: PREFERRED TYPES)

IP 65 & IP 67	PNP / Connector M12	Sender	YCA-50S4-4300-G012	YCA-50S4-5300-G012	YCA-50S4-6300-G012
			Receiver	YCA-50R4-4300-G012	YCA-50R4-5300-G012
IP 65, IP 67 & IP 69K	PNP / PUR-cable 2 m	Sender	YCA-50S4-4300-D020	YCA-50S4-5300-D020	YCA-50S4-6300-D020
		Receiver	YCA-50R4-4300-D020	YCA-50R4-5300-D020	YCA-50R4-6300-D020
	PNP / PUR-cable 5 m	Sender	YCA-50S4-4300-D050	YCA-50S4-5300-D050	YCA-50S4-6300-D050
		Receiver	YCA-50R4-4300-D050	YCA-50R4-5300-D050	YCA-50R4-6300-D050
	PNP / PUR-cable 10 m	Sender	YCA-50S4-4300-D100	YCA-50S4-5300-D100	YCA-50S4-6300-D100
		Receiver	YCA-50R4-4300-D100	YCA-50R4-5300-D100	YCA-50R4-6300-D100
	PNP / Connector M12	Sender	YCA-50S4-4300-G012-69K	YCA-50S4-5300-G012-69K	YCA-50S4-6300-G012-69K
		Receiver	YCA-50R4-4300-G012-69K	YCA-50R4-5300-G012-69K	YCA-50R4-6300-G012-69K
	PNP / PUR-cable 2 m	Sender	YCA-50S4-4300-D020-69K	YCA-50S4-5300-D020-69K	YCA-50S4-6300-D020-69K
		Receiver	YCA-50R4-4300-D020-69K	YCA-50R4-5300-D020-69K	YCA-50R4-6300-D020-69K
PNP / PUR-cable 5 m	Sender	YCA-50S4-4300-D050-69K	YCA-50S4-5300-D050-69K	YCA-50S4-6300-D050-69K	
	Receiver	YCA-50R4-4300-D050-69K	YCA-50R4-5300-D050-69K	YCA-50R4-6300-D050-69K	
PNP / PUR-cable 10 m	Sender	YCA-50S4-4300-D100-69K	YCA-50S4-5300-D100-69K	YCA-50S4-6300-D100-69K	
	Receiver	YCA-50R4-4300-D100-69K	YCA-50R4-5300-D100-69K	YCA-50R4-6300-D100-69K	

TYPE-SPECIFIC DATA

Number of beams	3	4	3
Beam gap (Bg) [mm]	400	400	500
Total height (Ht) [mm] *	1025	1412	1154
Housing height (Hb) [mm]	995	1382	1124
Protective height (Hs) [mm]	832	1232	1032
Height extension (He) [mm]	92	79	21
Current consumption [mA]	110	110	110
Response time [ms]	4.2	5.0	4.2

PART REFERENCE (BOLD: PREFERRED TYPES)

IP 65 & IP 67	PNP / Connector M12	Sender	YCA-50S4-3400-G012	YCA-50S4-4400-G012	YCA-50S4-3500-G012
			Receiver	YCA-50R4-3400-G012	YCA-50R4-4400-G012
IP 65, IP 67 & IP 69K	PNP / PUR-cable 2 m	Sender	YCA-50S4-3400-D020	YCA-50S4-4400-D020	YCA-50S4-3500-D020
		Receiver	YCA-50R4-3400-D020	YCA-50R4-4400-D020	YCA-50R4-3500-D020
	PNP / PUR-cable 5 m	Sender	YCA-50S4-3400-D050	YCA-50S4-4400-D050	YCA-50S4-3500-D050
		Receiver	YCA-50R4-3400-D050	YCA-50R4-4400-D050	YCA-50R4-3500-D050
	PNP / PUR-cable 10 m	Sender	YCA-50S4-3400-D100	YCA-50S4-4400-D100	YCA-50S4-3500-D100
		Receiver	YCA-50R4-3400-D100	YCA-50R4-4400-D100	YCA-50R4-3500-D100
	PNP / Connector M12	Sender	YCA-50S4-3400-G012-69K	YCA-50S4-4400-G012-69K	YCA-50S4-3500-G012-69K
		Receiver	YCA-50R4-3400-G012-69K	YCA-50R4-4400-G012-69K	YCA-50R4-3500-G012-69K
	PNP / PUR-cable 2 m	Sender	YCA-50S4-3400-D020-69K	YCA-50S4-4400-D020-69K	YCA-50S4-3500-D020-69K
		Receiver	YCA-50R4-3400-D020-69K	YCA-50R4-4400-D020-69K	YCA-50R4-3500-D020-69K
PNP / PUR-cable 5 m	Sender	YCA-50S4-3400-D050-69K	YCA-50S4-4400-D050-69K	YCA-50S4-3500-D050-69K	
	Receiver	YCA-50R4-3400-D050-69K	YCA-50R4-4400-D050-69K	YCA-50R4-3500-D050-69K	
PNP / PUR-cable 10 m	Sender	YCA-50S4-3400-D100-69K	YCA-50S4-4400-D100-69K	YCA-50S4-3500-D100-69K	
	Receiver	YCA-50R4-3400-D100-69K	YCA-50R4-4400-D100-69K	YCA-50R4-3500-D100-69K	

* Total height given with M12 connector. For cable version, add 6 mm.