

EC Series

COUPLINGS

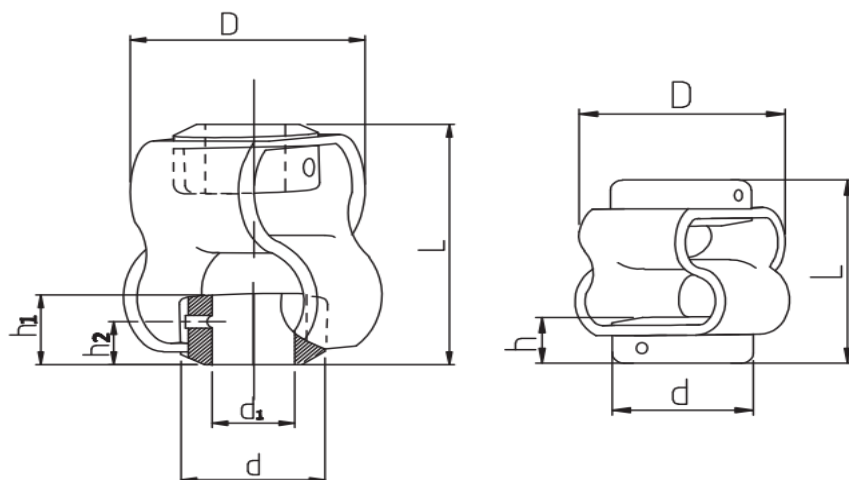
“3-Piece Flexible and Durable Body, Set Screw System”



- Non-rebound, flexible and durable design
 - Maintenance, lubrication, etc. not required, very long life
 - Fully error-free motion and power transfer
 - 100% electrical and vibration isolation between the two ends of the interconnection piece separated by polyurethane
 - High torque-resistant polyurethane material
 - All parts are jointly centered and prestressed to protect against misalignment
 - The special structure of the intermediate element flexible polyurethane connecting material from steel body, specially pure polyurethane material reduces axial misalignments to a minimum.
 - 6 or 10 mm different hole diameter options
- Set screw system

HM 2409

MECHANICAL DIMENSIONS



Applications

- Shaft Encoders
- Stepper Motors
- Tachogenerators

Outer Dia. D mm	Hub Dia. d mm	Hub Length h mm	Length L mm	Bore Size mm		Max. Misalignment			Max. Torque (Nm)	Max. RPM	Torsional Stiffness Nm/rad
				Min. d1	Max. d2	Radial mm	Angular	Axial mm			
30	19	11	36	6	12	3.2	10	2.0	1.5	3000	10

ORDER CODE

Art No: **EC-30-06-06-36** (Coupling Ø30x36mm, for Ø6mm shaft)

Art No: **EC-30-10-10-36** (Coupling Ø30x36mm, for Ø10mm shaft)