



## GENERAL FEATURES

- Suitable for measuring the length and speed of the target moving with its wheeled structure
- Output waveform according to measurement distance, suitable for international measurement units
- Spring system to compensate for uneven parts of the measuring surface
- Wide variety of mounting possibilities thanks to the spring lever
- 250 mm wheel circumference
- 3000 RPM operating speed
- 300 kHz response frequency
- High accuracy
- Robust structure, long service life
- Easy mounting

HM 2409

## APPLICATIONS

- Measuring position, velocity and path in linear motion applications
- Various packing machines
- Sheet manufacturing
- Textile machinery and general industrial machinery
- Conveyor bands
- Wood industry

## TECHNICAL FEATURES

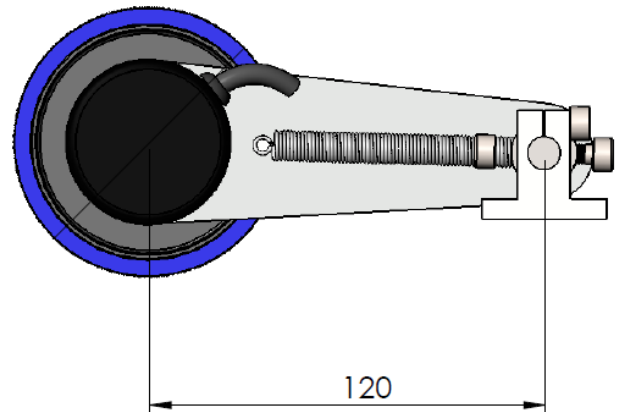
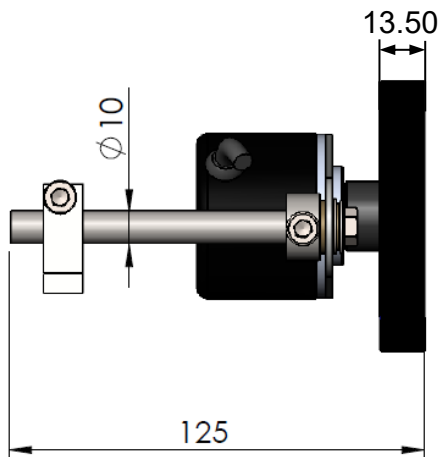
## Electrical Specifications

Resolution	Refer to resolution table (page 2)					
*Electrical Interface			TTL	HTL	HPL	
	Supply		5 VDC	10...30 VDC	5...30 VDC	
	Output		5 VDC TTL	5 VDC TTL	5...30 VDC PP	
*Output Signals						
Response Frequency	300 KHz					
Current Consumption	50 mA nominal					
Output Current	100 mA max. (per channel)					
*Electrical Connection	5 or 8x0,14 mm <sup>2</sup> shielded cable M16 / 8 pin male connector					

## Mechanical Specifications

Wheel Circumference	250 mm	
Wheel Diameter	79,6 mm	
Starting Torque	Depend on coefficient of friction	
Operating Speed	3000 RPM max.	
Operating Temp.	-25...+85 °C	
Storage Temp.	-40...+100 °C	
Ambient Humidity	%35...%85 RH	
Material	Encoder: Aluminum	
	Wheel: NBR (outer part) + POM (body)	
Protection Class	IP54	



## MECHANICAL DIMENSIONS (mm)

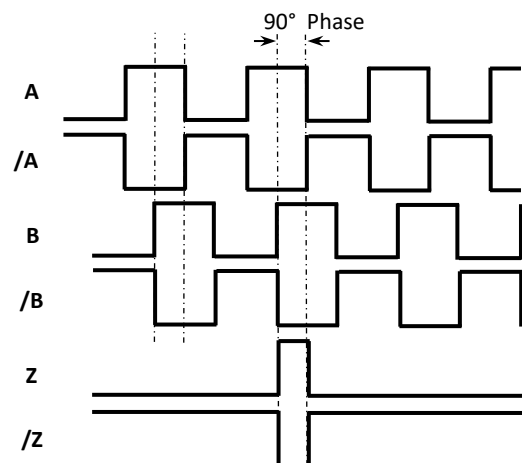


## RESOLUTION

The Number of Encoder Pulse	Gear Ratio	Wheel Circumference	Resolution (Moving distance per 1 pulse)
2500 pulse	1:1	250mm	0,1mm/pulse
250 pulse	1:1	250mm	1mm/pulse
25 pulse	1:1	250mm	10mm/pulse

## ELECTRICAL CONNECTIONS

	
SIGNAL	CABLE COLOR
A	YELLOW
/B	WHITE
+V	RED
0 V	BLACK
/A	BLUE
B	GREEN
/Z	GREY
Z	PINK



The table above shows the cable colors of the sensor output signals. If the control circuit is suitable in the Line Driver sensors of the not output signals (/A, /B, /Z) have to be added to the system. If it is not suitable /A, /B, /Z signal cables must be fixed as insulated separately. Don't forget that these edges have electricity too.

## ORDER CODE

