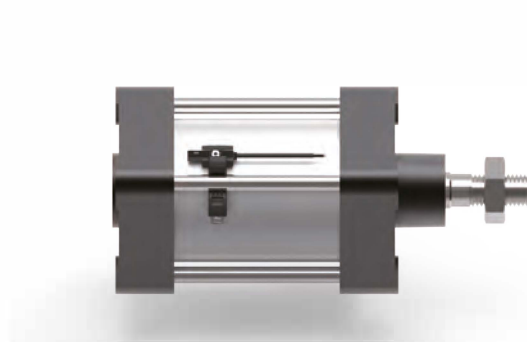
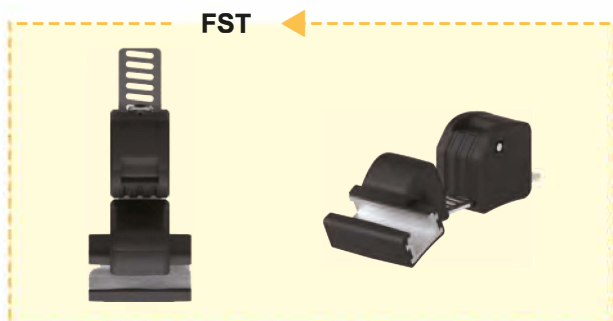


# CLAMP SERIES



## FST

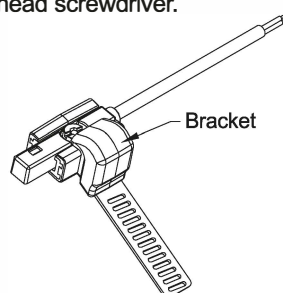
FST is designed for KT-32 & KT-40 & KT-50 & KT-65 & KT-75 series sensor on tie-rod cylinder.



## How to mount:

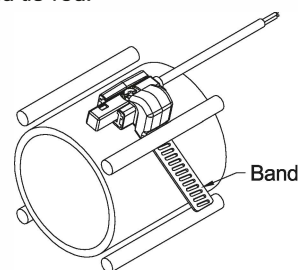
### Step 1

Fix sensor on bracket with 2mm hexagon wrench or flathead screwdriver.



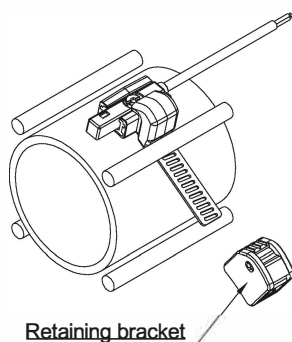
### Step 2

Insert the band between cylinder tube and tie-rod.



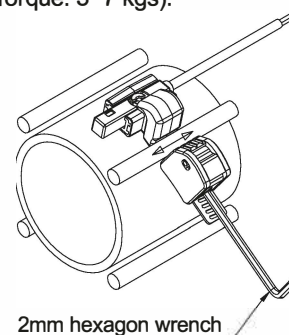
### Step 3

Slide the retaining bracket onto the band.



### Step 4

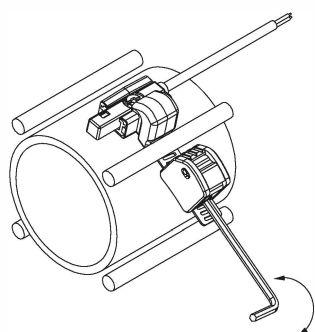
Adjust by moving bracket to most ideal sensing position and tighten screw. (Torque: 5~7 kgs).



## How to dismount:

### Step 1

Use 2mm hexagon wrench to release the screw for 2~3 turns.



### Step 2

Use 2mm hexagon wrench to lift up the screw cap to remove the retaining bracket.

