

HEMOMATIK

Sweden

Approved

S.E. 230412

Scale

1:1

Liquid level switch

Stainless Steel, SUS-316

High Temp 125°C

Art.nr.

HS23-A-SI

Drawing nr.

HS23-A-SI

Rev.

Date

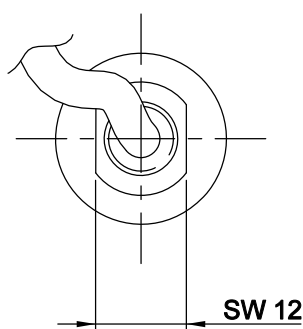
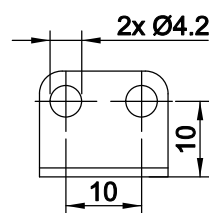
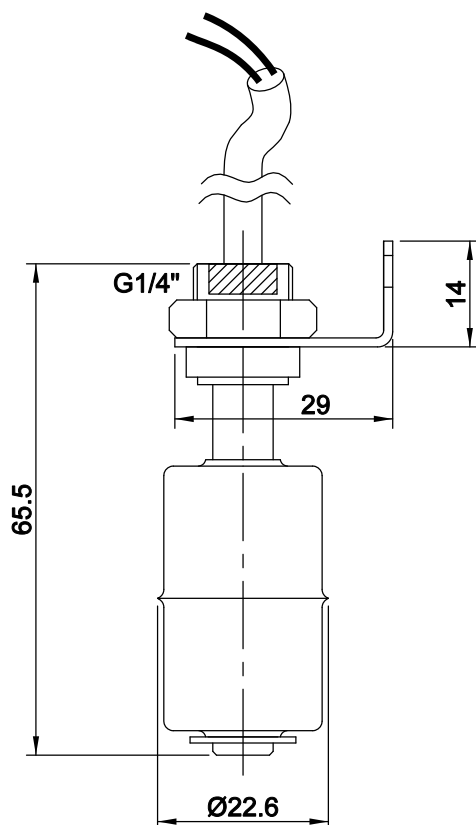
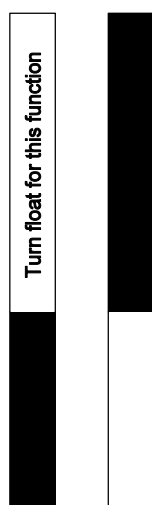
220311

Sign.

AN

Rev. date

(NC) brown
 blue
 NO



MATERIALS

Stem : SUS-316

Float : SUS-316

Cable : 5m, Silicone 2x 0.50mm²

Temp. max : +125°C

MOUNTING

Max. pull tension on cable 20N

Always use bracket or extension tube.

ELECTRICAL DATA

Contact rating *	70 VA
Supply voltage	3-48 V
max current	1,5 A

* = resistive load

Note. Above values are for resistive loads. Mechanical life is 30 millions. Use series resistor for lamp load, or other suitable protection for inductive loads if the rating is higher than 1/10 of the values above.

■ = Switch closed

□ = Switch open